

Directions

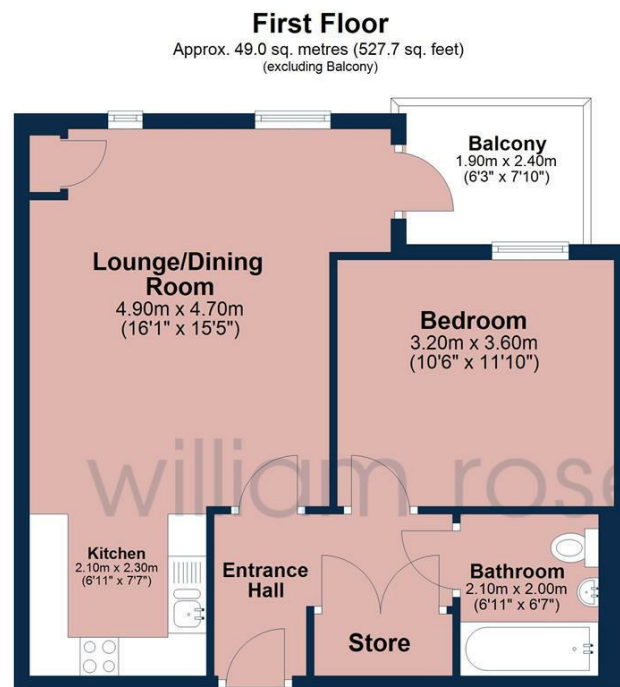
Viewings

Viewings by arrangement only. Call 02085042440 to make an appointment.

EPC Rating

B

Energy Efficiency Rating		Current	Potential
Very energy efficient - lower running costs			
(92 plus) A			
(81-91) B		84	84
(69-80) C			
(55-68) D			
(39-54) E			
(21-38) F			
(1-20) G			
Not energy efficient - higher running costs			
England & Wales		EU Directive 2002/91/EC	

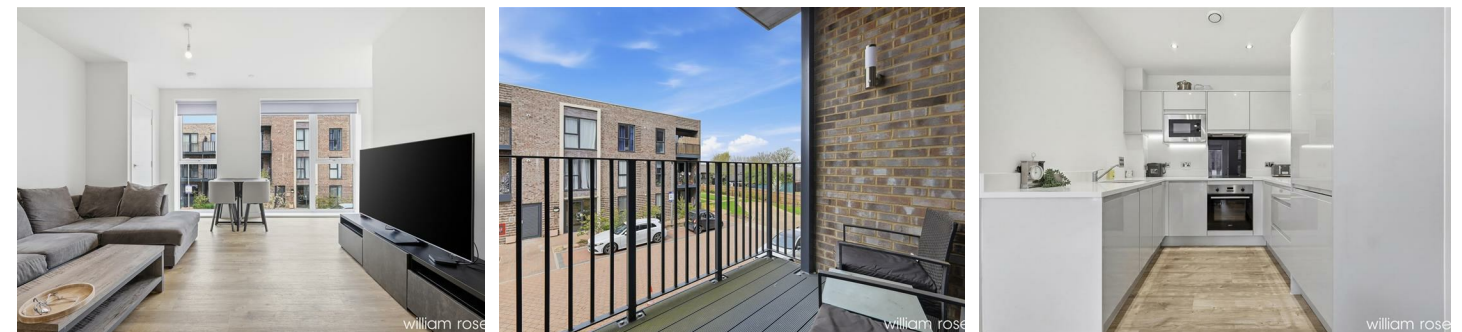


Total area: approx. 49.0 sq. metres (527.7 sq. feet)

All measurements have been taken as a guide to prospective buyers only and are not precise. This plan is for illustrative purposes only and no responsibility for any error, omission or misstatement. The services, systems and appliances shown have not been tested and no guarantee as to their operability or efficiency can be given. Measurements may have been taken from the widest area and may include wardrobe/cupboard space. No guarantee is given to any measurements including total areas. Buyers are advised to take their own measurements.

© @modephotouk | www.modephoto.co.uk
Plan produced using PlanUp. □

Academy Way



7 Academy Way, Loughton, IG10 3GS

£1,750 Per Calendar Month

- Modern one-bedroom apartment
- Contemporary fitted kitchen with appliances
- Stylish, high-specification bathroom suite
- Neutral décor throughout
- Close to Loughton High Road
- Bright and spacious open-plan living area
- Generous double bedroom
- Private balcony
- Excellent transport links via Loughton station
- Easy access to Epping Forest

7 Academy Way, Loughton IG10 3GS

Stylish one bedroom apartment in Loughton featuring open-plan living, private balcony and excellent transport links into London along with good access into Loughton.



Council Tax Band: C



A beautifully presented modern apartment to rent in Loughton, ideally situated within a sought-after development and perfect for professionals seeking contemporary living with excellent transport links into London.

The property offers a bright and spacious open-plan living and dining area, designed to maximise natural light and provide a comfortable space for both relaxing and entertaining. The adjoining modern fitted kitchen features sleek units, integrated appliances and ample worktop space, creating a practical and stylish environment. The apartment further benefits from a well-proportioned double bedroom, offering a peaceful retreat, along with a contemporary bathroom suite finished to a high standard. A welcoming entrance hall with built-in storage enhances the overall functionality of the home.

A standout feature is the private balcony, providing valuable outdoor space, ideal for unwinding after a long day or enjoying morning coffee. Finished in neutral tones throughout, this property is offered in excellent condition and is ideal for tenants looking for a low-maintenance, modern home in a well-connected location.

Loughton is a highly sought-after location for renters, offering the perfect balance between green surroundings and fast access into Central London. The property is conveniently located for Loughton Underground Station (Central Line), allowing straightforward commutes to Stratford, Liverpool Street and the West End. The town's vibrant High Road provides a wide range of amenities including supermarkets, independent cafés, restaurants and leisure facilities, catering to everyday needs as well as social living. One of Loughton's key attractions is its close proximity to Epping Forest, offering extensive green space for walking, running and outdoor activities, making it especially appealing to professionals who value both convenience and lifestyle. With excellent transport links, a strong local community and a mix of modern developments and natural surroundings, Loughton continues to be one of Essex's most desirable rental locations.

Early viewing is highly recommended.